



MANUFACTURING AUTOMATION

- MAKE-TO-ORDER MANUFACTURING EFFICIENCY • SUMMARIZED MRP •
- BARCODING • MULTI-BIN WAREHOUSE MANAGEMENT •

Better Business through Teamwork

FULL-SUITE MANUFACTURING SOLUTION FOR SAGE ERP MAS 90 AND 200



Development Partner

GOLD

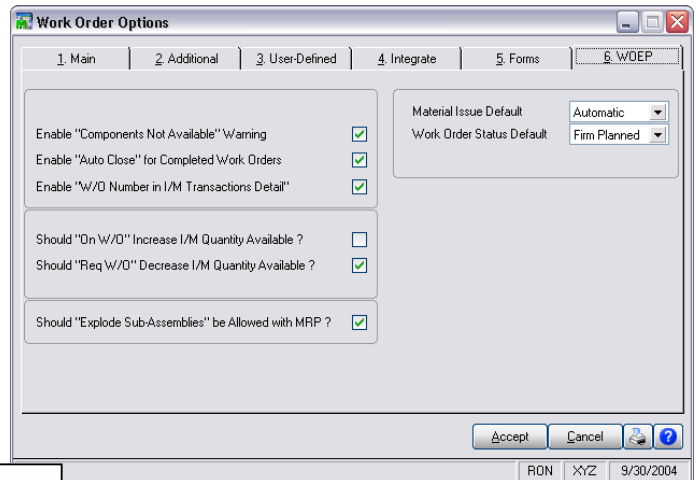
Warehouse and Manufacturing Automation doesn't have to be complicated. There's no need for expensive software that operates outside of your accounting system. At ACS Group, we build the power into your Sage ERP MAS 90 and 200 system—bringing you powerful enhancements and partnering with the best scanning solutions on the market. Our solution makes Make-to-Order manufacturing simple and efficient. It's seamless, cost-efficient, and easy-to-upgrade.

ACS MAKE-TO-ORDER MANUFACTURING EFFICIENCY

provides make-to-order, assemble-to-order, and engineer-to-order manufacturers a more efficient and effective manufacturing process through Sage ERP MAS 90 and 200's Work Order Module. With increased automation and pre-set options, Manufacturing Efficiency will help minimize user entry and maximize work flow.

ACS MULTI-BIN WAREHOUSE MANAGEMENT

helps produce with the right materials with FIFO Directed Picking. The system calculates which products to use first and where to find them. Directed Put Away calculates the best locations to stock finished goods.



ITEM SUMMARY	CURNT	04/30	05/31	06/30	07/31	08/31	09/30	10/31	11/30	12/31	01/31	02/28	03/31	FUTURE
BOARD-04230	MOTHERBOARD													
VENDOR:	MAKE	MAKE ITEM	VENDOR	BEG QOH:	485	BEG DEMAND:	7	BEG SUPPLY:	218	BUYER/PLANNER:	/	LEAD:	1	DAYS
PROD LINE:	CARD	RECORD	POINT:	0	MIN ORD QTY:	0	PROD TYPE:	FIN GOOD	PROC:	MAKE	SALES U/M:	EACH		
LAST RECEIPT DATE:	08/15/07	LAST SOLD/ISSUED DATE:	12/08/07	ON SO:	0	ON BO:	1000	AVG COST:	296.838					
LAST COST:	372.124	LAST WO COST:	372.124	LBR:	4.375	MAT:	330.870	OP:	.000	FO:	33.526	VO:	3.533	
ON HAND:	696	696	696	696	696	696	696	696	696	696	696	696	696	696
ON SO:	0	0	0	0	0	0	0	0	0	0	0	0	0	0
ON BO:	0	0	0	0	0	0	0	0	0	0	0	0	0	0
ON PIO:	0	0	0	0	0	0	0	0	0	0	0	0	0	0
ON W/O:	0	0	0	0	0	0	0	0	0	0	0	0	0	0
REQ W/O:	0	0	0	0	0	0	0	0	0	0	0	0	0	0
FORECAST:	0	0	0	0	0	0	0	0	0	0	0	0	0	0
REQ BLD:	0	0	0	0	0	0	0	0	0	0	0	0	0	15
QUANTITY AVAIL:	696	696	696	696	696	696	696	696	696	696	696	696	696	681
SCHEDULED RECEIPTS:	PUR QTY	DUE DATE	PO NUMBER	ENT DATE	ACTION COMMENTS	ASSIGNED VENDOR								
	55	06/13/06	0095085	06/13/06		ELECTRONICS SUPPLY CO.								
SCHEDULED BUILDS:	PLN QTY	DUE DATE	WO NUMBER	ENT DATE	ACTION COMMENTS									
	1	02/14/06	0095027	02/14/06	HOLD									
	10	02/21/06	0095028	02/21/06	HOLD									
	10	02/22/06	0095029	02/22/06	HOLD									

ACS SUMMARIZED MRP

advises and generates builds and purchases. Forecast and Required for Build are calculated appropriately along with advisement actions for scheduled builds (Work Orders) and receipts (Purchase Orders.) Advisement actions include "Pull In Date", "Push Out Date", "Place New Order" and "Cancel Order".

VBSCAN FROM VRAKAS/BLUM¹

runs on wireless, handheld data collection devices, capturing work order transaction data on the shop floor in real time, without the need for computer workstations. It prompts for and collects all of the same data you can enter in Work Order Transaction Entry, in a clean, intuitive handheld interface



FOUR DISTINCT SOLUTIONS ADD UP TO ONE MANUFACTURING BREAKTHROUGH

ACS MAKE-TO-ORDER MANUFACTURING EFFICIENCY

(available separately)

- System knows which Sales Orders to build Work Orders from and does not duplicate
- Automatically create sub-assemblies
- Summarize like items when auto generating Work Orders from Sales Orders
- Work Order number is linked back to Sales Order for easier tracking
- Auto-Close Work Orders when processing completions
- Option to “Apply Entire Costs To Completed Quantity” when processing Completions for a given Work Order
- Enter Work Orders with released status
- Auto-Finish uses a standard set of options to complete the Operation and Scheduling Tabs.

COMING SOON FOR MANUFACTURING EFFICIENCY

- New Sales Order Entry Buttons:
Build Availability - Displays FG and Indented BoM Components with Quantity on Hand, Quantity Available, Quantity Required and Quantity Short. Will also display On PO detail and On WO detail with delivery dates and quantities.
Create WO - Auto Generate a WO in the same manner as the Auto Generate WO from SO utility.
- Display Routing Detail in the BoM Costed Bill of Materials Report. Routing Detail includes Labor, Outside Processing, Fixed Overhead and Variable Overhead totals. These new totals are added to the Materials Total and displays a new Grand Total.
- New Purchase Order tie-ins on the Work Order Entry Operations detail tab and Work Order Traveler. PO Detail (Vendor Info, PO Number, Date, Required Date, Quantity Ordered) and Receipt Detail (Receipt Number, Date, Quantity Received) will be provided.

ACS SUMMARIZED MRP GENERATION & REPORTS

(available separately)

- Include or exclude: prior period demand or supply, Sales Quotes, Forecast - Display Only; just to name a few.
- Provides for additional lead time for purchasing and manufacturing
- Supplier Schedule report
- Auto Generate “Weekly” & “Monthly” activity at the same time
- Auto Generate Purchase Orders and Work Orders
- BOM Selection/Explosion handling

ACS MULTI-BIN MANUFACTURING EDITION

(available separately)

- Multi-Bin automation for Primary, Overflow and Staging locations or anywhere in the warehouse.
- Directed Picking, auto allocation of inventory from bins in Picking Sheets.
- Allocation of inventory and distribution of bin locations in Work Order Entry
- Allocations transferred from Material Issue transactions
- Auto allocate FIFO by expiration dates raw materials
- Vendor Lot Traceability and Expiration Date Control
- Comprehensive RF Barcoding integration with ScanForce and Scanco

VBSCAN BY VRAKAS/BLUM

(available separately)

- Immediate upload to W/O Transaction Entry via Wi-Fi with option to auto-update.
- Optional Completion Backflush of Material Issues and/or Labor Transactions.
- Maintain user-defined operational step Statuses and manage statuses via Labor Wi-Fi transactions. View statuses in WO Inquiry screen.
- Auto-Close Work Order feature when processing Completions.
- Option to Apply “Entire Costs to Completed Quantity” when processing Completions for a given Work Order
- Option to print Completion Labels for the completed quantity using the default Crystal form and printer.
- Choose between the following Batch Options
Standard - Stock MAS 90 and 200 handling
Work Order Number - Separate batches by Work Order Number
Transaction Type - Separate batches by Material Issues, Labor and Completions
Device ID - Separate Batches by Scanner ID. The last 3 digits of the Scanner ID are used as the Batch User ID code.
- Integrations with ACS Manufacturing Efficiency and ACS Multi-Bin