

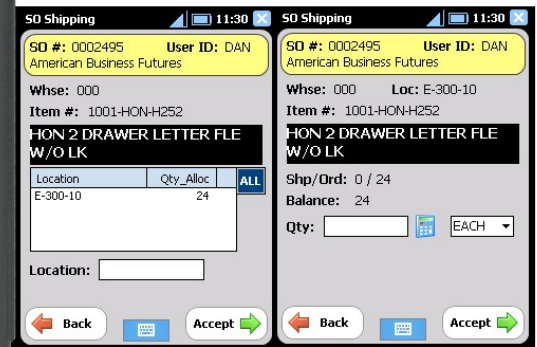
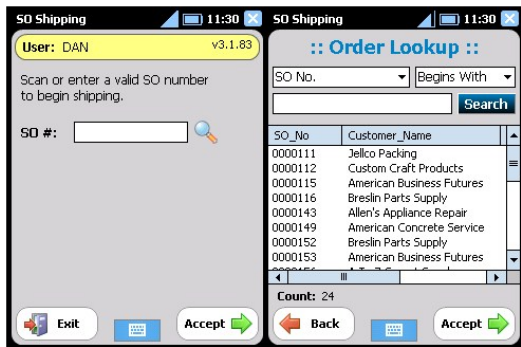


ACS Multi-Bin Integration



Unlock the true power of inventory management within your MAS system with the combination of Multi-Bin locations and bar code scanning.

ScanForce bar coding and ACS Multi-Bin combine to provide an explosive solution maximizing the possibilities of inventory control within MAS 90/200.



DIRECTED PICKING

Free your pickers from the burden of a paper pick ticket!

Allow the handheld to direct pickers to the next location and the next item to be picked. The picker is guided through the quickest and most efficient path through the warehouse to pick each order.

PICK AND PACK

This feature allows you to pick items for an order by moving those items to a staging shipping location.

This improves the real-time accuracy of inventory levels, allowing a clear view of each bin's stock level.

Orders can be invoiced immediately or at a later time.

WAVE PICKING

Pick several orders at once! Completely streamline the picking process by walking the warehouse one time while picking multiple orders.

Wave Picking combines the two-step picking and packing process of Pick and Pack with the power of Directed Picking. The picker only visits each location once and picks all of the orders at once. After the picking is completed, a packer then creates the shipment record back in MAS by simply scanning the items per Sales Order. The handheld validates the items based on the Sales Order indicated to create a quick and accurate shipping record or invoice back in MAS.